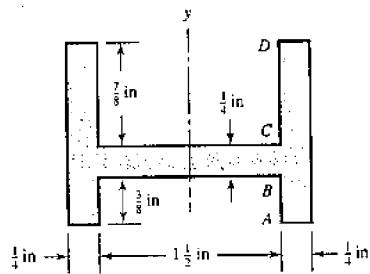
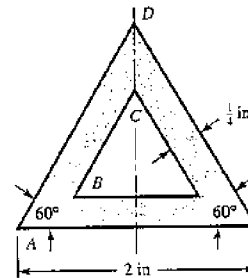


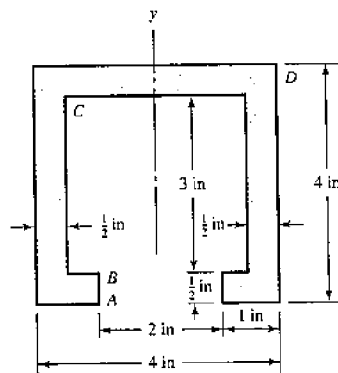
For each section illustrated, find the second moment of area, the location of the neutral axis, and the distances from the neutral axis to the top and bottom surfaces. Suppose a positive bending moment of 10 kip · in is applied; find the resulting stresses at the top and bottom surfaces and at every abrupt change in cross section.



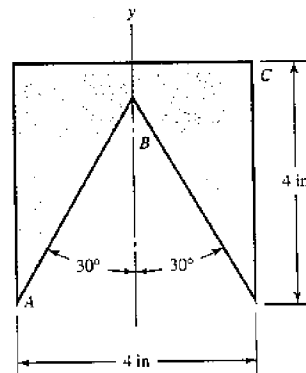
(a)



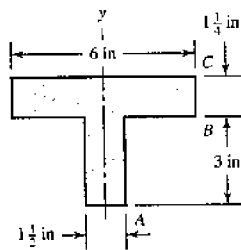
(b)



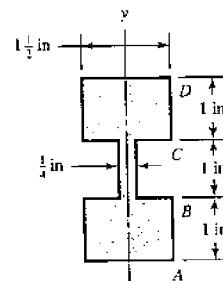
(c)



(d)



(e)



(f)